



**ENERGY DYNAMICS, INC.**

# SEA Supplier Keynotes

## Patrick Bye

### President

9/10/2009





**ENERGY DYNAMICS, INC.**

- EDI - Located in Rockford, Illinois
- Since 1980
- 22 employees
- CNC machine shop driven by Lean Thinking
- Engaged Member of SEA
- Multiple industries
- Responsive customer service





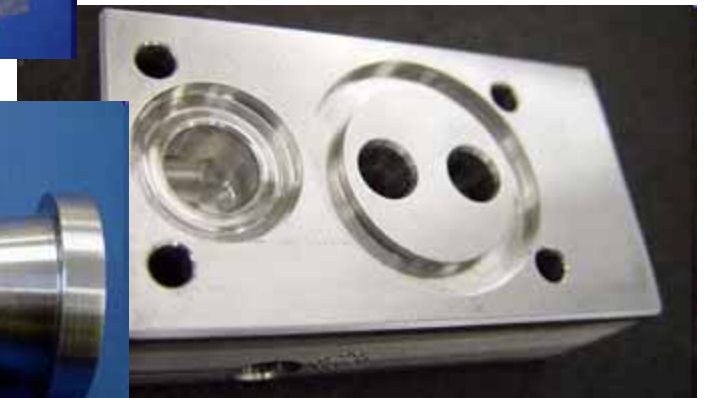
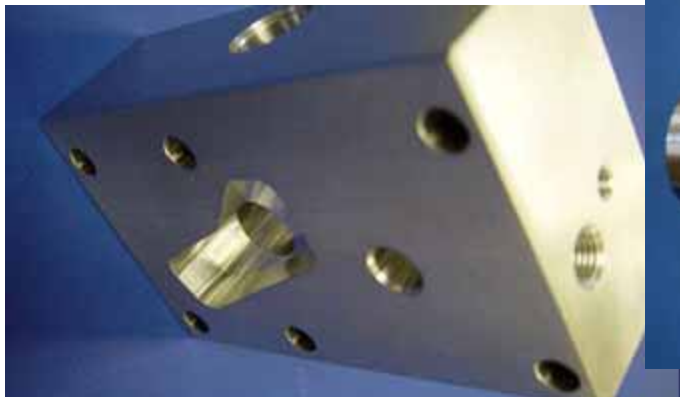
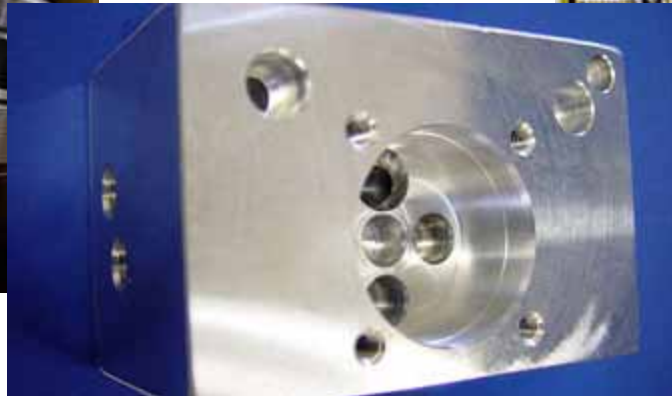
**ENERGY DYNAMICS, INC.**

- Specialize in Fluid Power / Hydraulics
- Moved all machines into cells last year and joined SEA
- Manage the complete supply chain
- Kanban deliveries are a way of life for us
- We are a "Contract" CNC machine shop





**ENERGY DYNAMICS, INC.**





**ENERGY DYNAMICS, INC.**

## Customers

- Enerpac
- Amtec / Navistar
- SPX
- Hydratight
- Forest City Gear
- Nord Gear
- Hadley Gear
- Dresser-Rand
- Ingenium Aerospace
- TK Simplex
- Liebherr Aerospace
- Corrigan
- Nissan Forklifts
- Gates
- Greenlee Textron

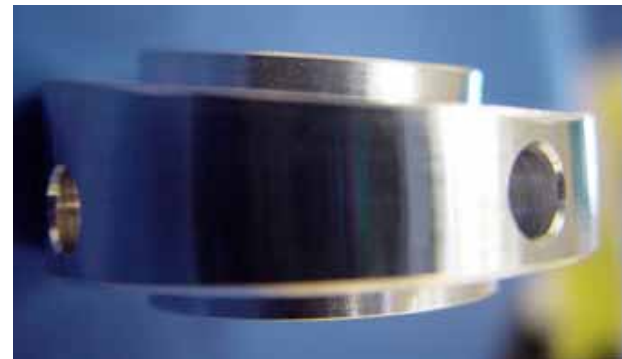




**ENERGY DYNAMICS, INC.**

## Culture of Winning

- Before SEA, could not even start a discussion with some Customers, now.....
- Liebherr Aerospace selected us from the SEA “engaged” list
- New Customer, New orders every month
- \$\$s are small now but keep doubling every month, and.....





**ENERGY DYNAMICS, INC.**

## What We Offer Customers

- Previous supplier – 56 days
- EDI - 5 days
- **a 91 % Difference**



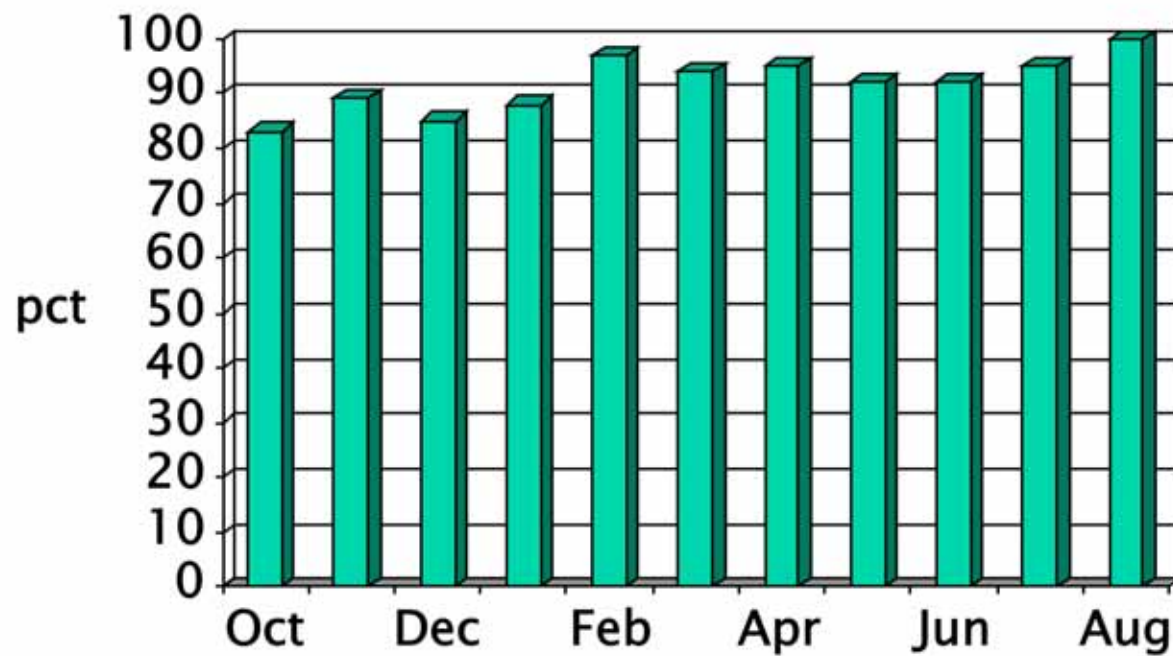
Customer quote “ Energy Dynamics is the only game in town that can do this for us!”





**ENERGY DYNAMICS, INC.**

## EDI On Time 2008 – 2009

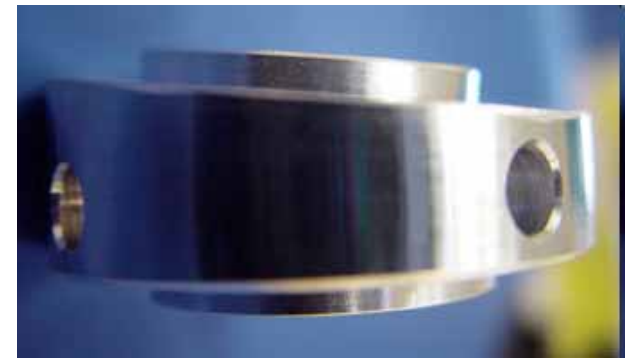




**ENERGY DYNAMICS, INC.**



Thank You!



Please visit our website at:  
**[www.energy-dynamics-inc.com/](http://www.energy-dynamics-inc.com/)**

Pat Bye , President  
**[patbye@energy-dynamics-inc.com](mailto:patbye@energy-dynamics-inc.com)**  
815-877-1410